

INFORMATION AND DATA MANAGEMENT- de onde viemos e para onde vamos

Walter W. Koch



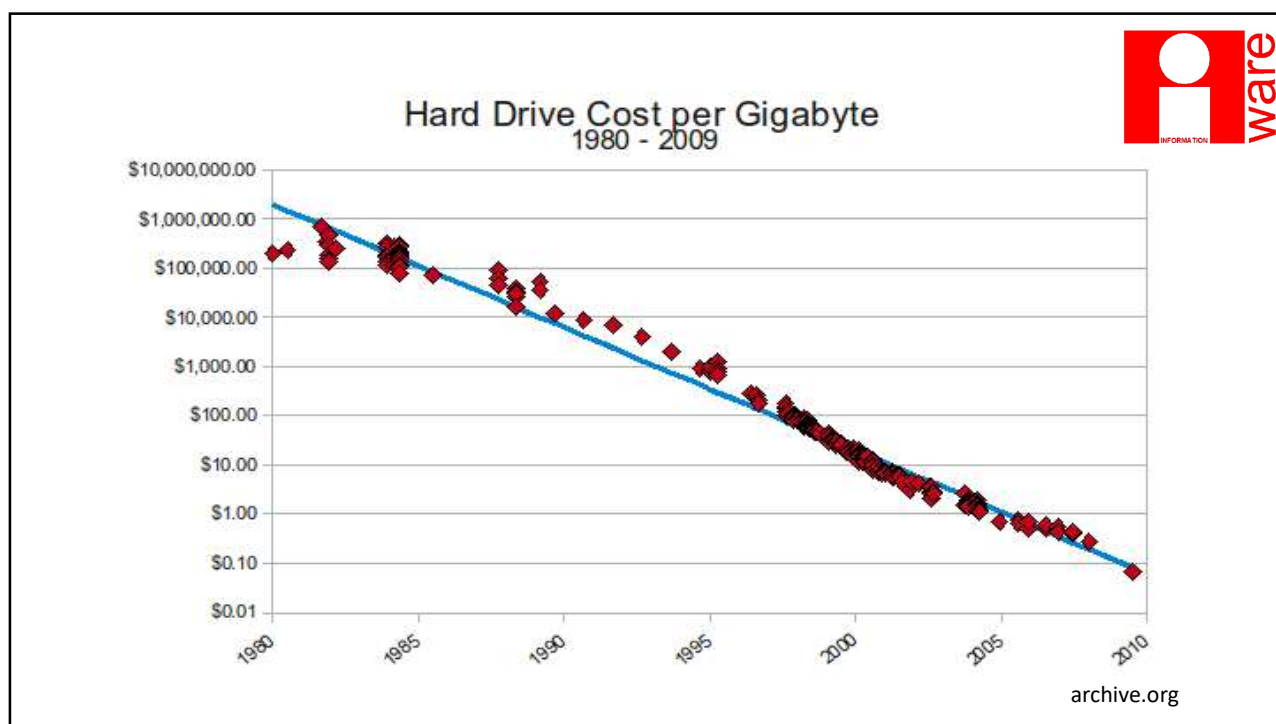
1

Eu

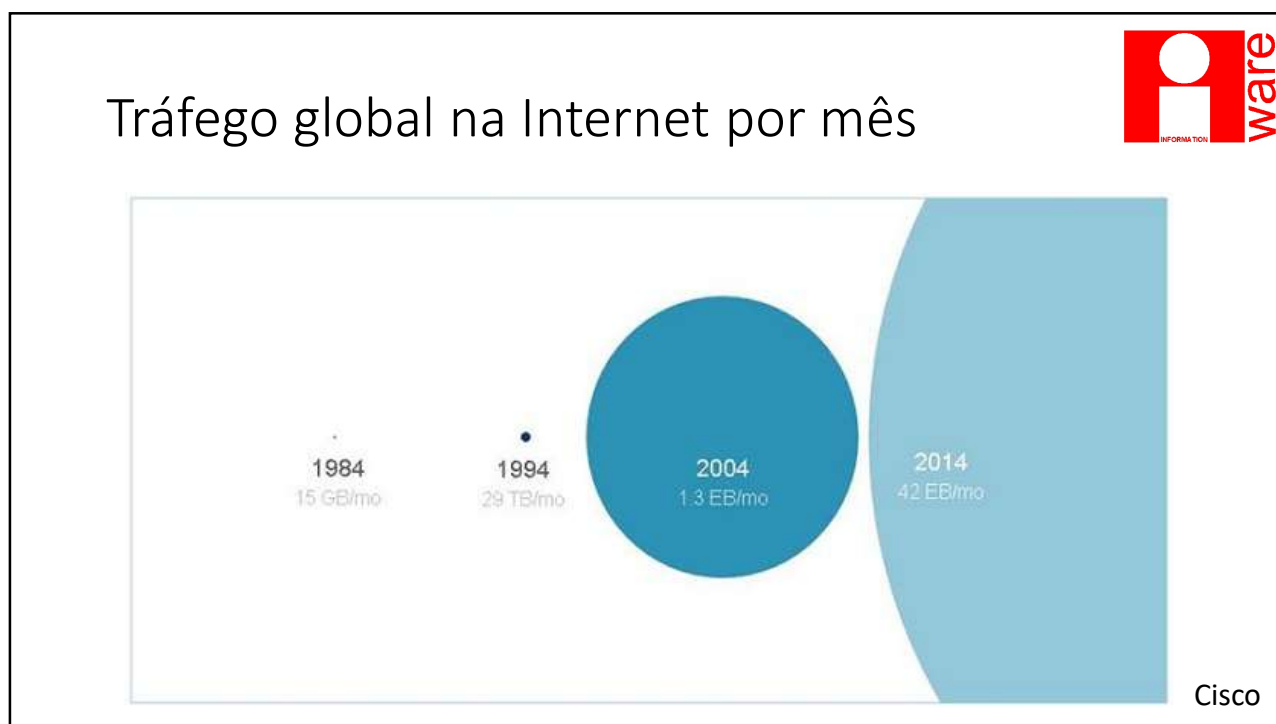
- Pai
- Cibernauta
- Pioneiro tecnologia
- Evangelista
- Arquiteto de sistemas



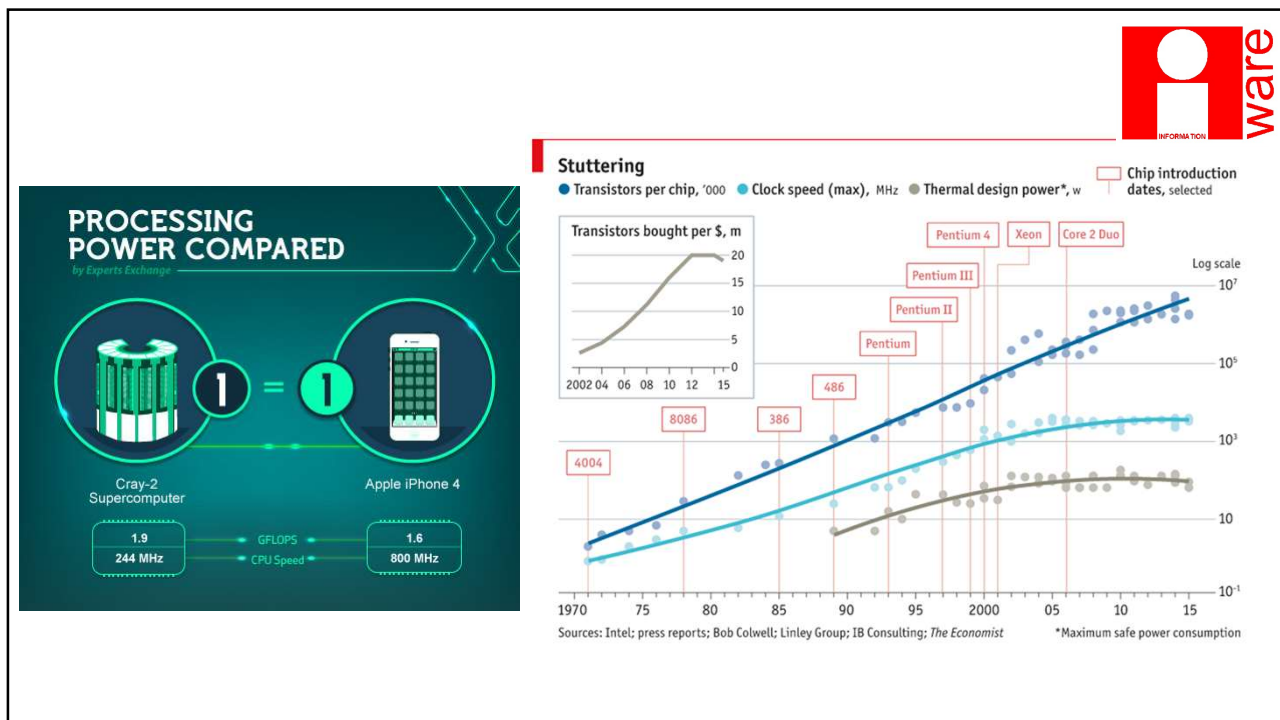
2



3



4



5

ware
INFORMATION

Os últimos 10 anos

- SMAC
 - Social
 - Mobile
 - Analytics
 - Cloud

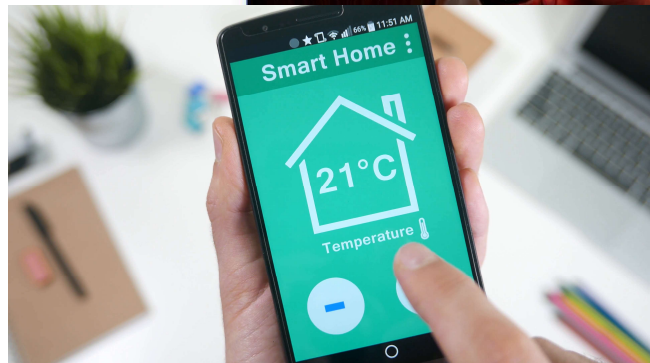
SmartPhone e Cloud – o novo mainframe!

6

Smartphone e suas evoluções

Digue tchau para...

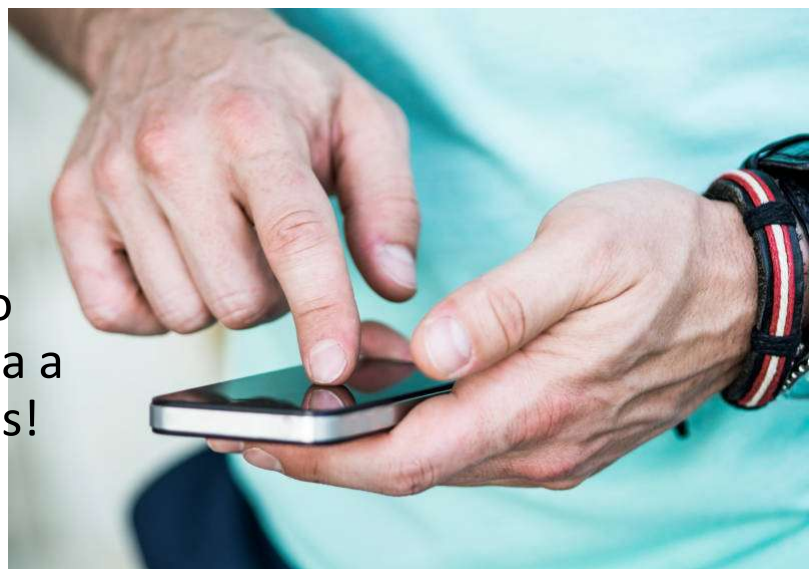
- Câmeras fotográficas
- Relógio
- Controle remoto
- Sistemas de navegação
- Cartões de crédito/débito
- Carteira
- Chave
- Identificação
- E muito mais...



7

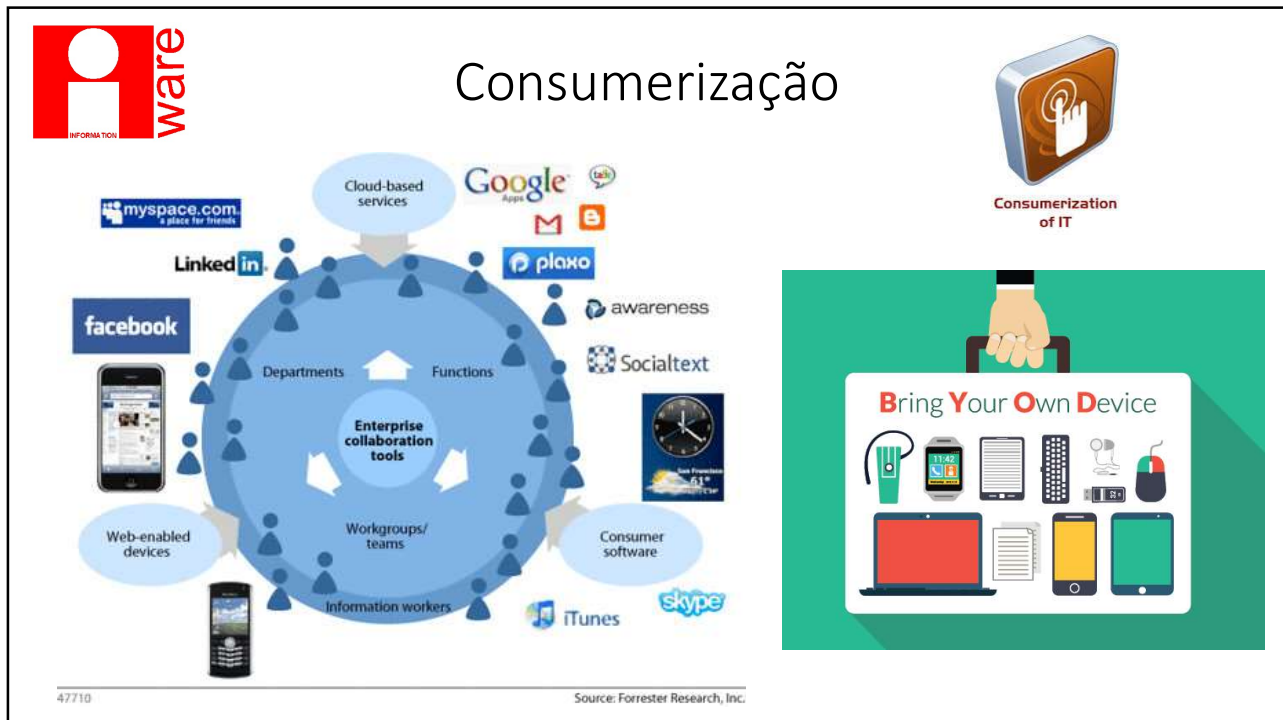


Checamos nosso celular em média a cada 6,5 minutos!



The Surprising Reason Millennials Check Their Phones 150 Times a Day – revista Inc.

8



9



10



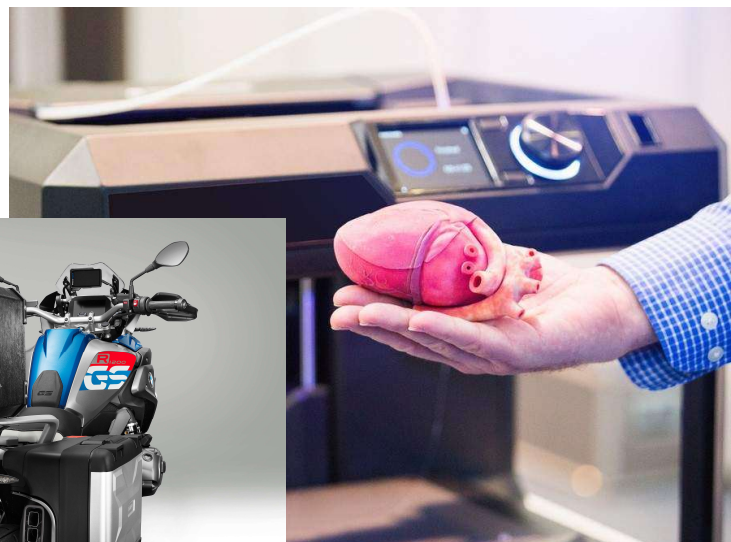
Drone

- Entrega
- Entrega comida
- No carro

11

Impressora 3D

- Órgãos
- Casas
- Comprimidos
- Peças



12

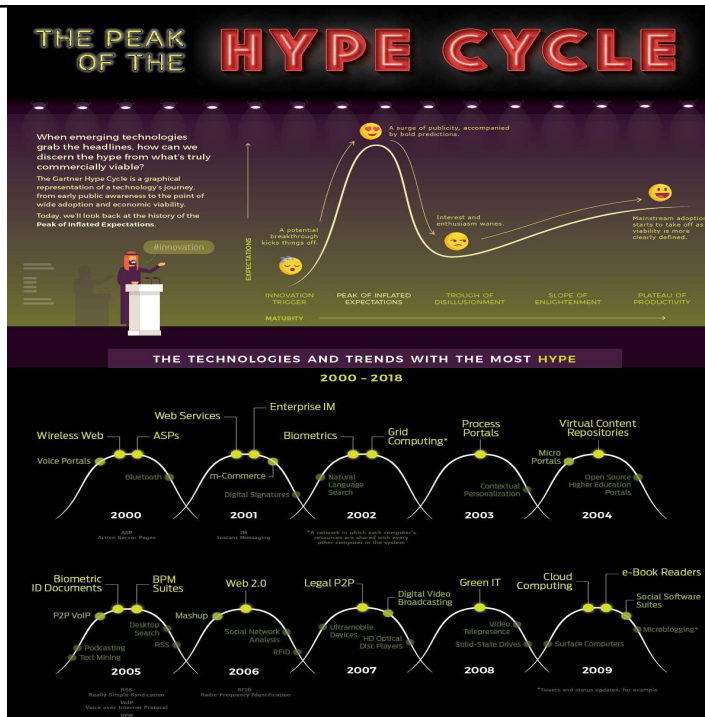
Veículos autônomos



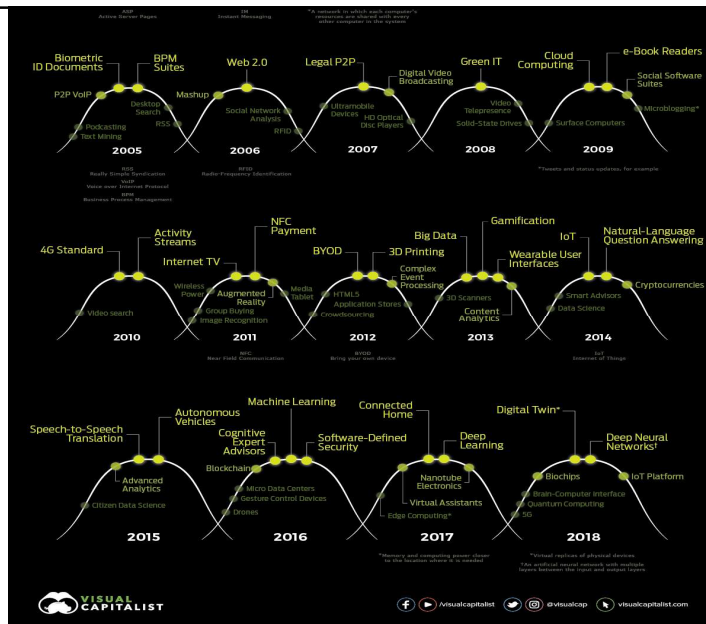
- Tesla
- Moto?



13



14



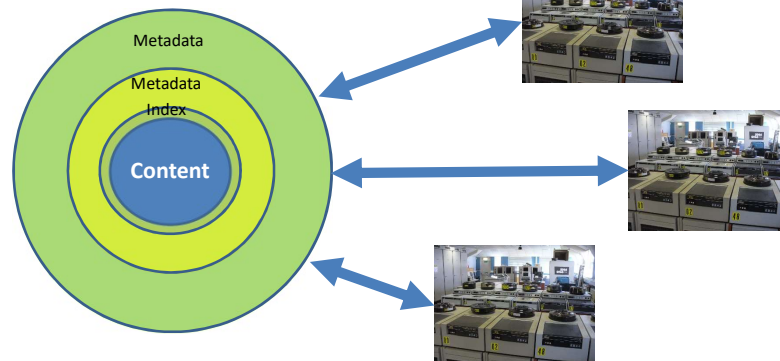
15



The Evolution of the

DATA

Metadata = data about the data

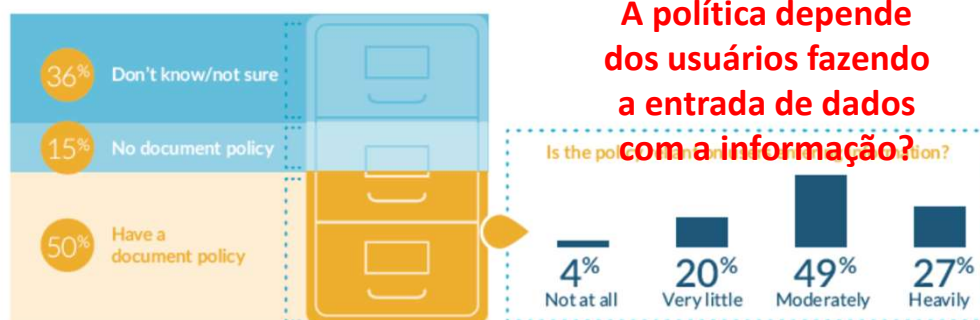


16



Estamos preparados??

Figure 1: Companies That Have a Corporate Policy for Electronic Documents



17

Legislação/Regulação

- Legislativo (desde 1996) (12.682)
- BACEN
- SBIS/CFM
- MoReq Jus

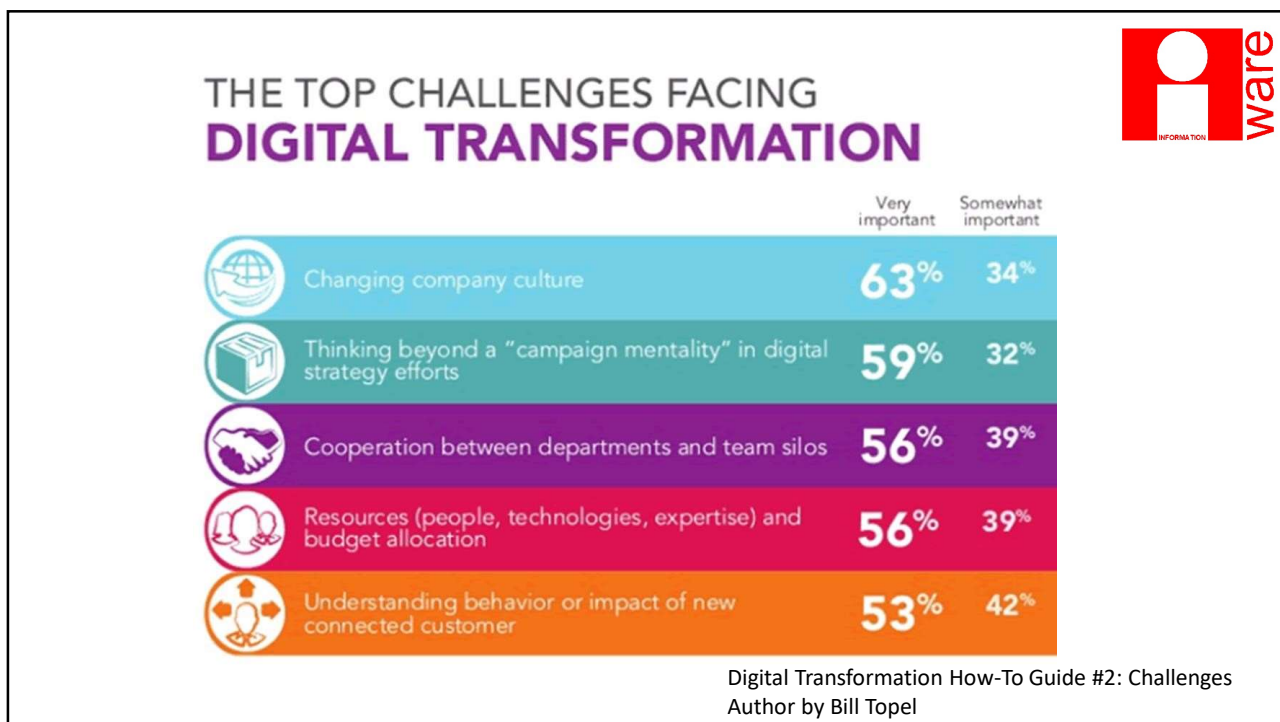


- Educação
- Conarq
- ABNT/ISO
- LGPD
- SOX

18



19



20

	Systems of Record	Systems of Engagement	Transparent Systems
	1987-2007	2007-2017	2017+
Technology Drivers	Imaging, capture, ERM, ECM, BPM	Cloud, mobile, SharePoint, file sync and share, SaaS	Everyone has devices. Most technology is in the cloud and invisible to users. Business continues whenever, wherever.
Problem	Paper explosion	Content explosion	Tidal wave of content. Multiple repositories are not the answer. Nothing can be found, managed or governed.
Focus	Automating transactions	Streamlining interactions	Consistency and simplicity
Information Managed	Documents and Images	Content of all types	Information and data of all types
People	Limited # of content specialists	Knowledge workers	People
Process focus	High-volume, mission critical	Team and ad-hoc collaboration	Processes are functional, such as HR, Finance, etc. Governance and IT disappear as processes from perspective of users.
IT role	Develop and deploy	Configure and iterate	Configure and monitor
Usability	Train, then use	Just use	Usability is in apps. Choice in apps is the future. If it isn't easy, people won't use it.
Governance	Records management	Information architecture	HR, Legal, and Business get together and decide what needs to be governed. Policy is set and automatically applied. Scalable governance in-place.
Buyers	Departments at large companies	Expansion into mid-sized market	Many fewer solutions, mainly as part of platforms such as AWS, Google and Microsoft clouds. Most org's pick one.

What Comes Next for ECM?

Mike Alsup
apud John Mancini

21

Oportunidades

- Inteligência Artificial
- Governança da informação
- Ferramentas para Digital Transformation



22

Inteligencia Artificial



Data se tornou a nova moeda de negócio nos últimos 5 anos. Nunca antes se gerou, combinou, recriou e consumiu data no patamar atual. Data evoluiu

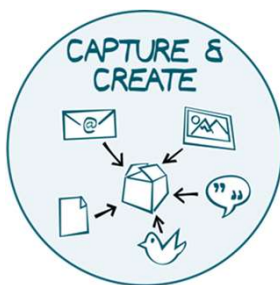


Ao se somar Machine Learning, Predictive Analytics e IA voce tem um sentimento de quanto tudo mudou.

Digital Transformation How-To Guide #2: Challenges
Author by Bill Topel

23

Ferramentas para Digital Transformation



Data precisa vir de algum lugar

- “Captura” de conteúdo nato digital
- Gestão da captura em smartphone
- “Captura” em redes sociais
- “Captura” em mensageria
- Qualidade da informação

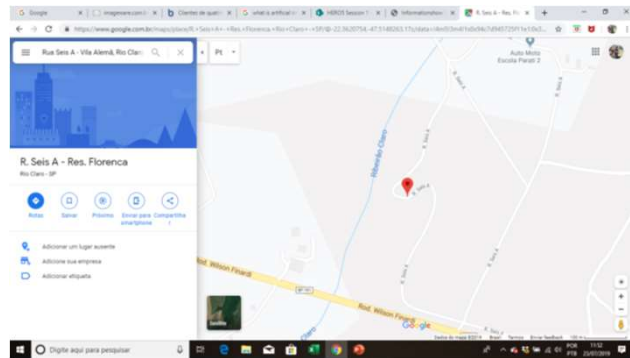
24

Ferramentas para Digital Transformation

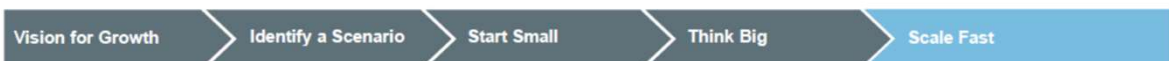


Data precisa ser organizado

- Taxonomia
- Metadados
- Extração de imagens
- Extração de áudio
- Semântica
- Qualidade
- Relacionado



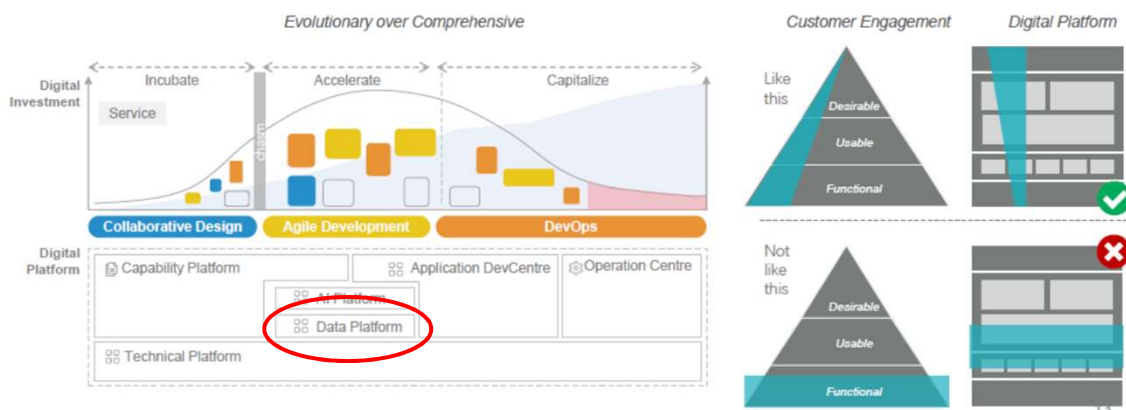
25



Change the Way of Evaluating Architecture

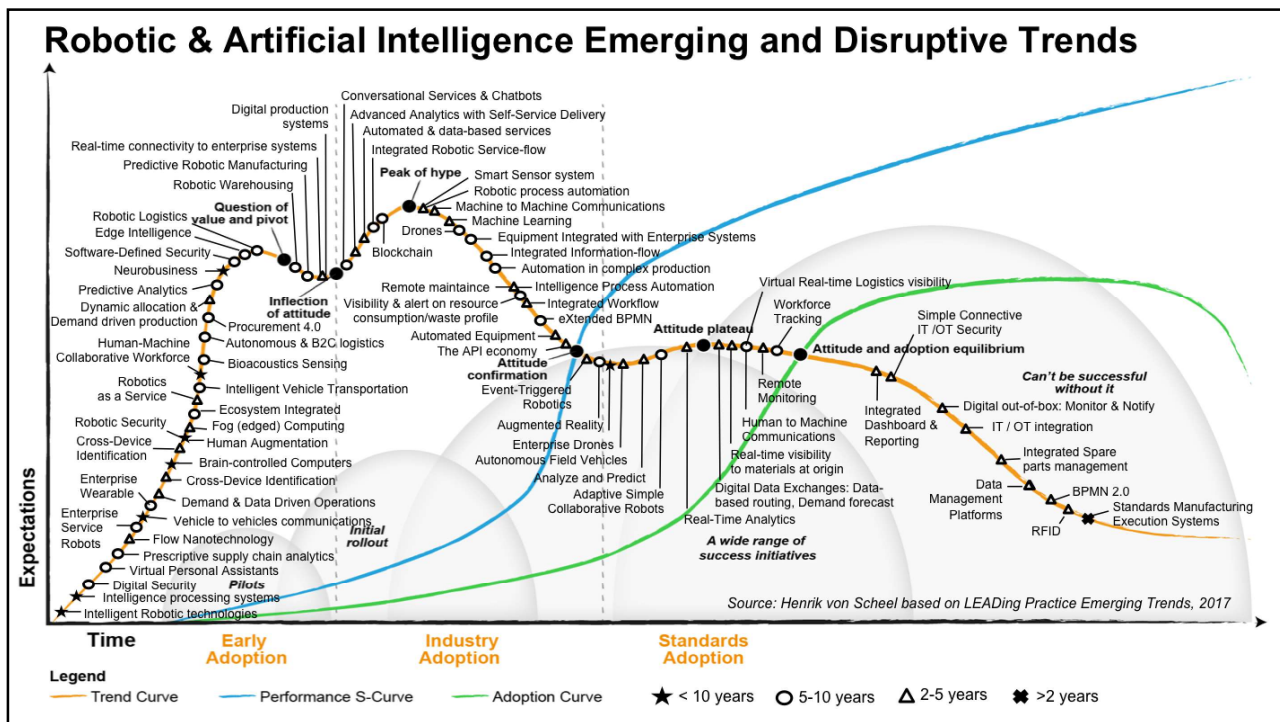
An evolutionary architecture supports incremental, guided change as the first principle across multiple dimensions.

— “Building Evolutionary Architectures”



Open ROADS <https://openroadscommunity.com/>

26



27



28



www.sbcoaching.com.br

29

The future of Information Governance



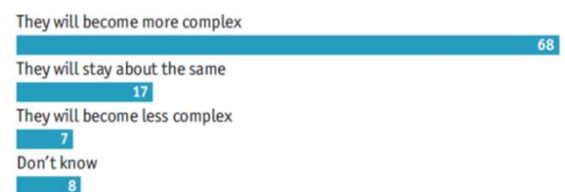
What was the primary catalyst for your company's decision to develop an information governance strategy?

(% respondents)



How do you expect the complexity of your company's information governance issues will change over the next three years?

(% respondents)

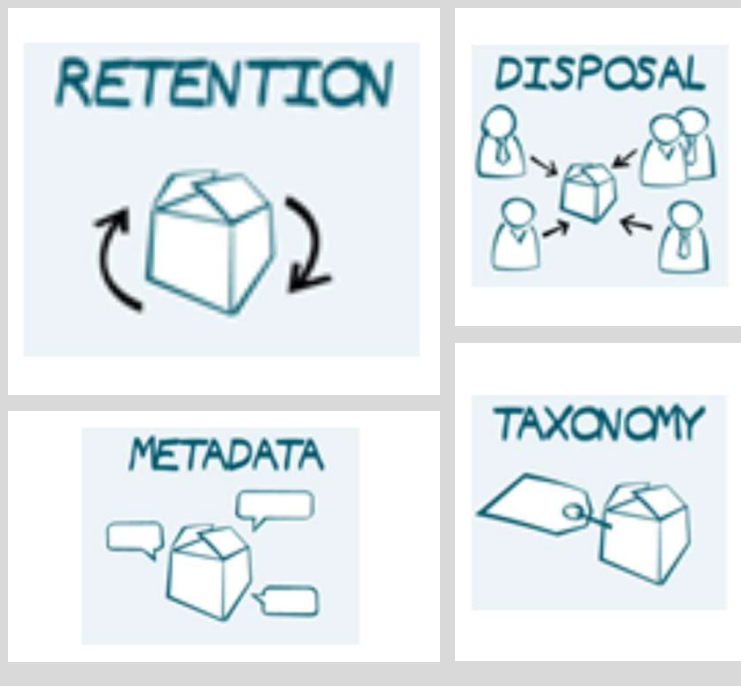


The Economist – The future of Information Governance

30

Ferramentas para Governance

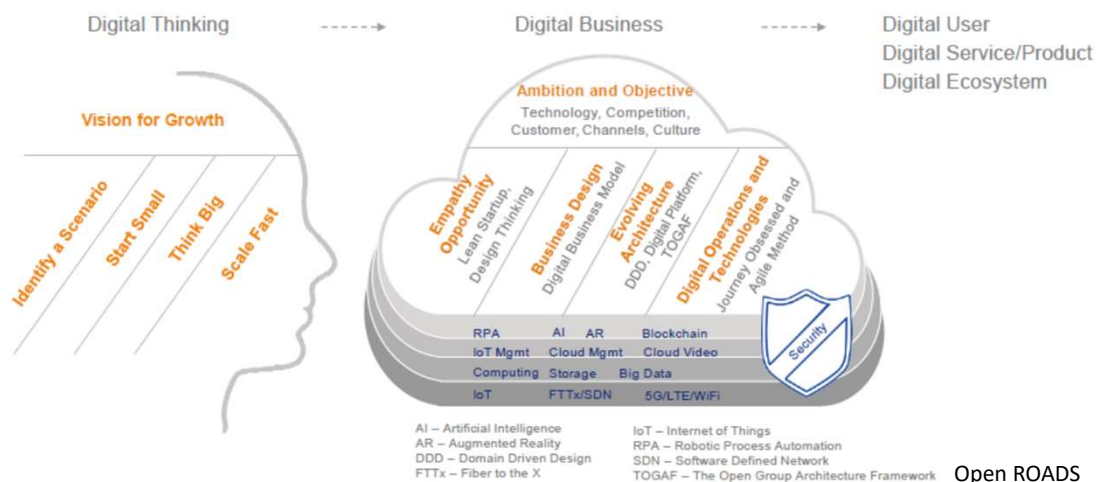
- Modelo de metadados
- Temporalidade
- Records management
- Digital Preservation
- Segurança



31

Digital Mastermind

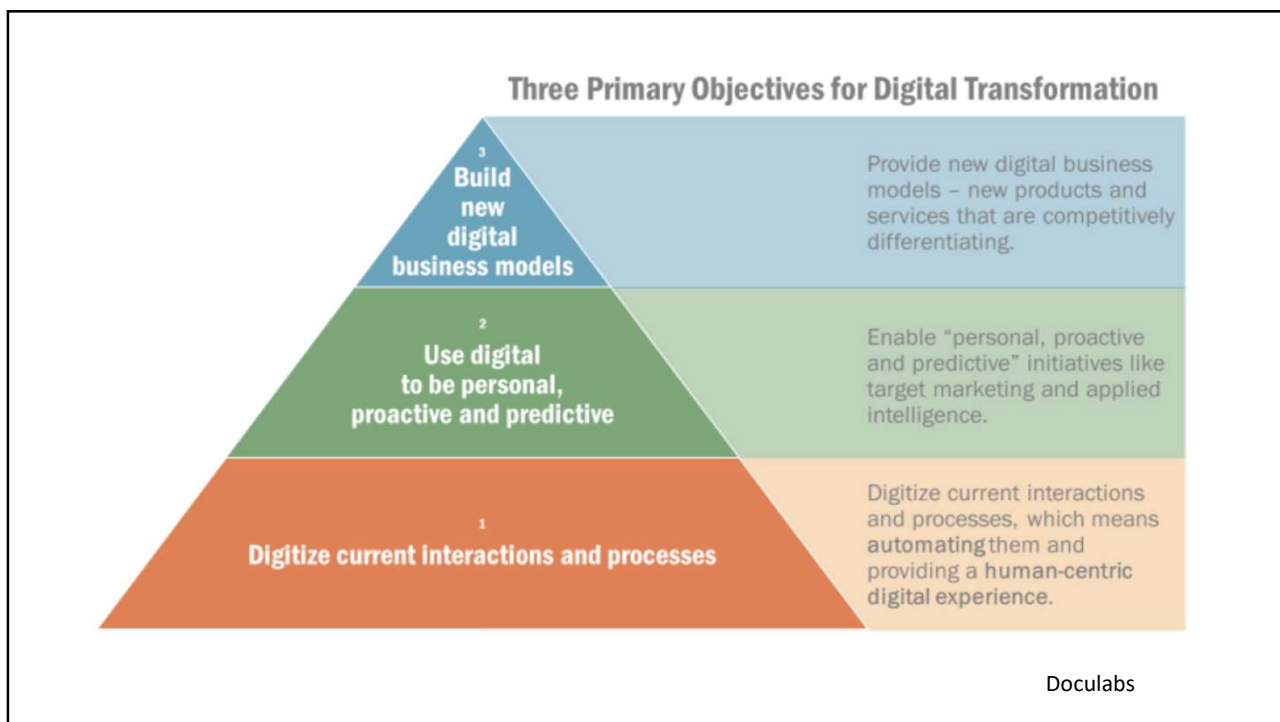
A Holistic Framework for Navigating the Digital Transformation Journey



32



33



34

A new era of computing is coming

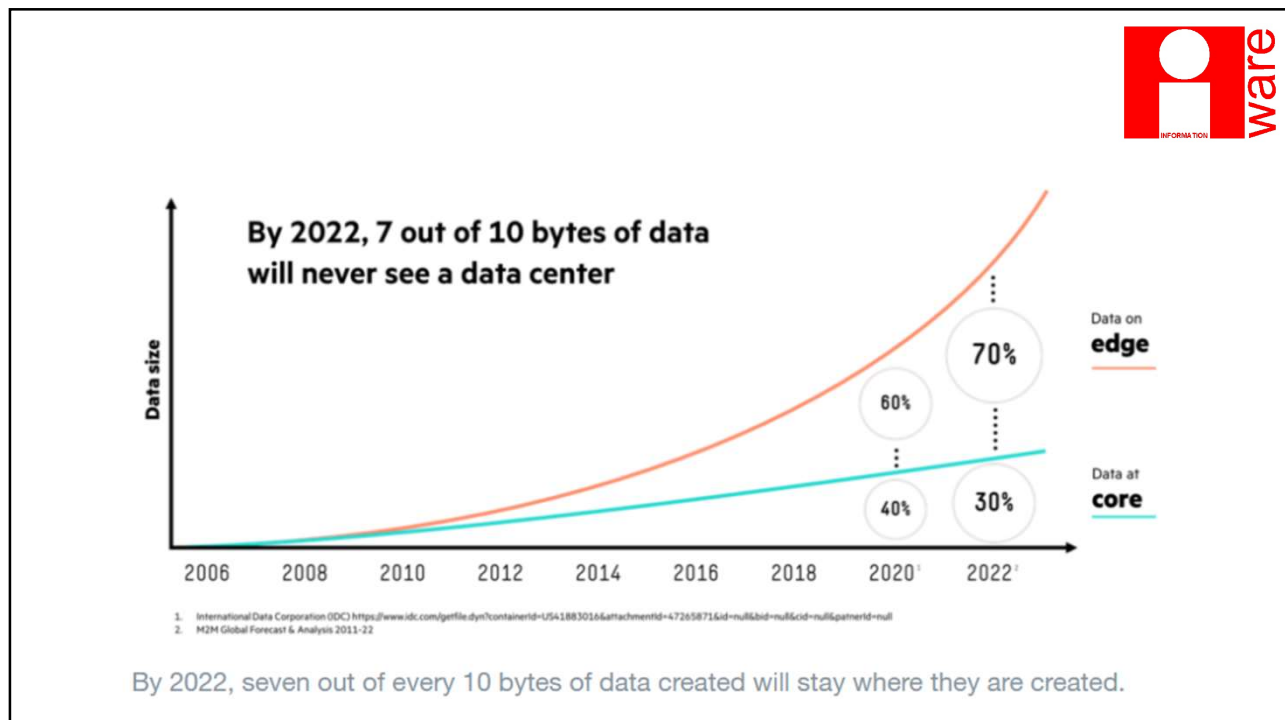


As we move beyond the fantastically productive Moore's Law era, we find ourselves on the precipice of a world of multiple, simultaneous inversions of conventional wisdom:

- Training neural networks will replace programming applications;
- Memory will be abundant and cheap, not scarce and expensive;
- Special-purpose computation elements will replace generic, general-purpose microprocessors;
- **Information technology will create value**, not just reduce cost;
- Photons will replace electrons as information carriers;
- Data will be distributed, not hoarded in server farms;

A new era of computing is coming. How can we make sure it is sustainable? World Economic Forum

35



36

E o amooooorrrr?

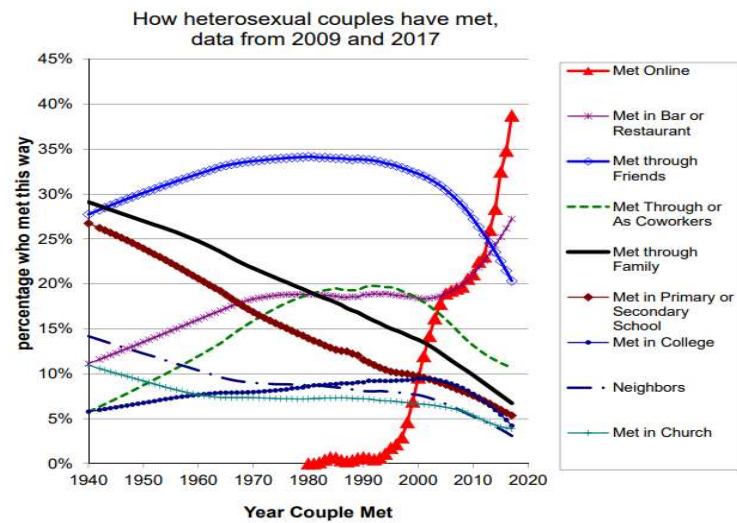


Figure 1: The continued rise of meeting online for heterosexual couples.

Source: How Couples Meet and Stay Together Surveys, 2009 and 2017 waves. Consistent with Rosenfeld and Thomas (2012), all trends are from unweighted Lowess regression with bandwidth 0.8 (Cleveland 1979), except for meeting online, which is a 5 year moving average because meeting online takes place in the more recent and data-rich part of the data. N=2,473 for HCMST 2009 and N=2,997 for HCMST 2017. Friends, family, and co-workers can belong to either respondent or partner. Percentages do not add to 100% because the categories are not mutually exclusive; more than one category can apply.

37



Ao
infinito e
além!



38



Obrigado!
wwkoch@hotmail.com

